

S77 Industrial Insulated Steel Roller Shutter



Door Overview

The S77 Steel Industrial roller shutter has been designed to ensure that the door can be assembled and installed with ease. The fixing kit is fully galvanised with pre-drilled holes for assembly. Guide section mounting holes are uniform throughout every door ensuring future repairs can be carried out using standard off the shelf materials quickly and efficiently.

S77 door slats are roll-formed steel insulated sections, eliminating the need for pre-assembly in your workshop, coming in manageable sections of 6-10 slat profiles depending on door size and your requirements. Also available is a fully loaded barrel option, the shutter curtain is fully loaded onto the shutter barrel during the manufacturing process, saving even more time on site.

(A surcharge is applied for fully loaded curtain option. Access equipment for offloading the delivery vehicle and access during site installation is required.)

Profile Specification

S77 is a double skin profile roll-formed from a single pre-coloured steel section with a hot injection polyurethane central core, this bonds to the internal face of the section giving additional strength and rigidity.

The S77 profile also has a short throw reinforced quirk which interlocks each profile to form a continuous door curtain.

Heavy duty slat end-caps are pop rivetted to ensure that the curtain always runs smooth and square in the guide channel.

A reinforced carrier strip connects the 20mm deep base seal to the bottom rail, eliminating draughts and debris from passing under the closed door.

Note: Doors exceeding 5000mm clear opening incorporate an additional reinforcing angle to the bottom rail.

Optional reinforced wind lock anchors ensure the S77 continues to perform up to 1250 Pascals required for level 5 wind loading tests.



Guide Section

The guide sections are rolled formed 3mm two part galvanised steel complete with wind lock recess, neoprene brush seals internally and externally.

Optional wind locks are fitted as standard on shutters over 5500mm opening width. On applications in extreme weather areas, wind locks may be required depending on application.

Shutter Mounting Kit

The S77 Shutter kit comprises of a range of 5mm thickness galvanised head plates from 400mm x 400mm up to 500mm x 500mm.

All head plates are pre-drilled to accept all relevant bearing carriers and motor mounting brackets.

Door guides comprise of two individual 3mm thick roll formed sections bolted together, eliminating the need for a separate fixing angle.

An additional support angle which encases the guide sections is supplied with doors exceeding 5500mm opening width, bringing the combined thickness up to 9mm on the stress corner of the guide channel.



Technical Data

The S77 steel shutter has been independently tested and certified to withstand a **Class 5** wind loading at 7000mm wide. The roll-formed insulated steel profile sections have been thermally assessed to a "U" value of **1.37 W/M².K**

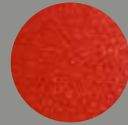
Curtain weight **12Kg Per Sq/M**

Maximum recommended door dimensions **35Sqm** area with a restriction of **6000mm** opening height.
please contact the technical department for doors exceeding these guidelines.

Standard Colour Range

S77 profile has a zinc protective coating applied before the laminated coating finish is adhered.

The zinc coating ensures that the cut ends of the steel slat will not show any signs of corrosion during standard weather conditions.



Flame Red
04E53



White
Ral 9010



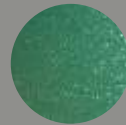
Ivory
10C31



Merlin Grey
18B25



Brown
08B29



Green
Ral 6005



Azure Blue
18C39



Beige
08B17



Goosewing Grey
10A05



Black
Ral 9005



Cornflower Blue
18E53



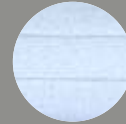
Olive Green
12B27



Sapphire Blue
Ral 5003



Sunflower Yellow
10E55



Silver
Ral 9006



Golden Oak

Colour References shown are deemed to be the nearest reference available.
Sample Colour Swatches are Available to ensure colour comparability.

Bespoke colours are available depending on quantity.

Motor & Controls

Pre-wired 3 phase Safe Drive Direct operator package with inbuilt anti-fall back device supplied as standard with low level controls. Additional control cards are available to extend the operational features of the controller.

All operators come complete with low level over-ride haul chain engagement.

The standard door operation is hold to run, with optional features:-

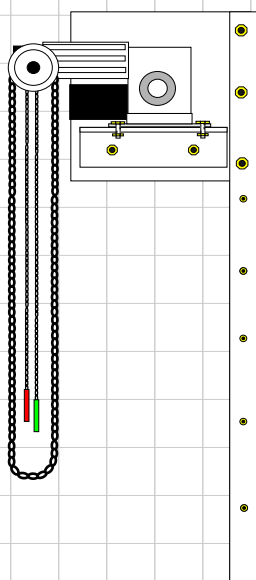
- Auto time return
- Plug in loop card
- Radio control
- Safety edge system

All of the above features require a control upgrade to be activated

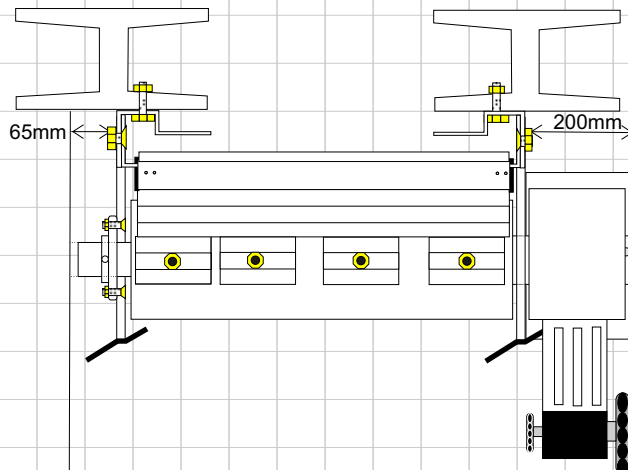


Technical Specification

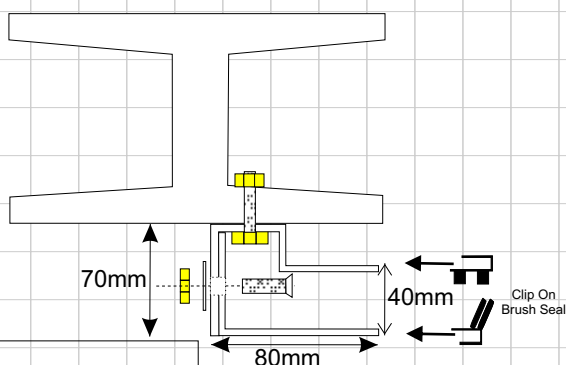
End View



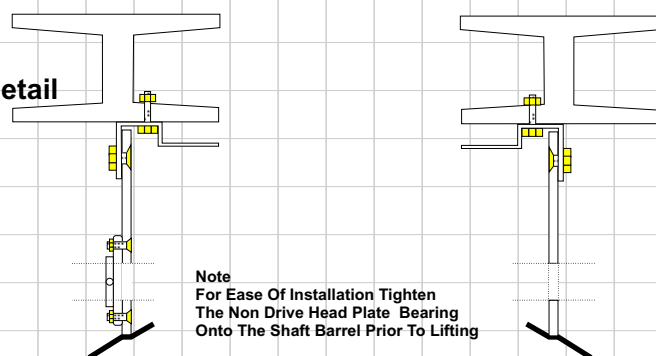
Plan View



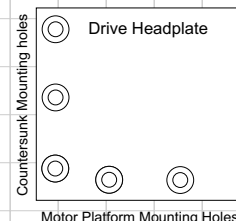
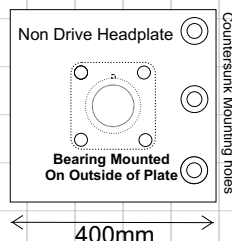
Guide Detail



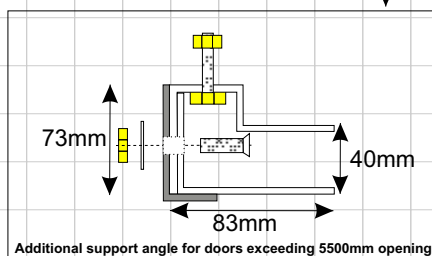
Head Plate Detail



Note
For Ease Of Installation Tighten
The Non Drive Head Plate Bearing
Onto The Shaft Barrel Prior To Lifting



450MM & 500MM AVAILABLE FOR DOORS
OVER 5000MM.
PLEASE CALL FOR TECHNICAL ADVICE



All Industrial Shutters Come Complete With The Following:

- ✓ 3 Phase Safe Drive Direct Drive Operator c/w Anti-Fall Back Device, Pre-wired Low Voltage Starter.
- ✓ 77mm X 18mm Steel Interlocking Insulated Slat Sections Complete With Pre-Coated Laminated Finish.
- ✓ Reinforced Galvanised Two Part Wind lock Guide Sections 80mm X 70mm X 3mm, Featuring Double Brush Seal
- ✓ Heavy Duty Base Rubber Seal & Carrier
- ✓ Easy Bolt Technology Ensures All Parts Have Fully Inter-Changeable Hole Centres For Ease Of Future Repairs.



Warranty

All S77 Insulated Steel doors come with a manufacturer two year warranty, subject to correct installation & servicing.

For Your Information

WM Shutters Ltd as a progressive company reserve the right to update or modify S77 Insulated Steel without prior consultation. All colour samples depicted in this brochure are as close to the original manufacture colour as possible, S77 Insulated Steel doors supplied may vary in colour from the brochure representation